

Sperry Marine

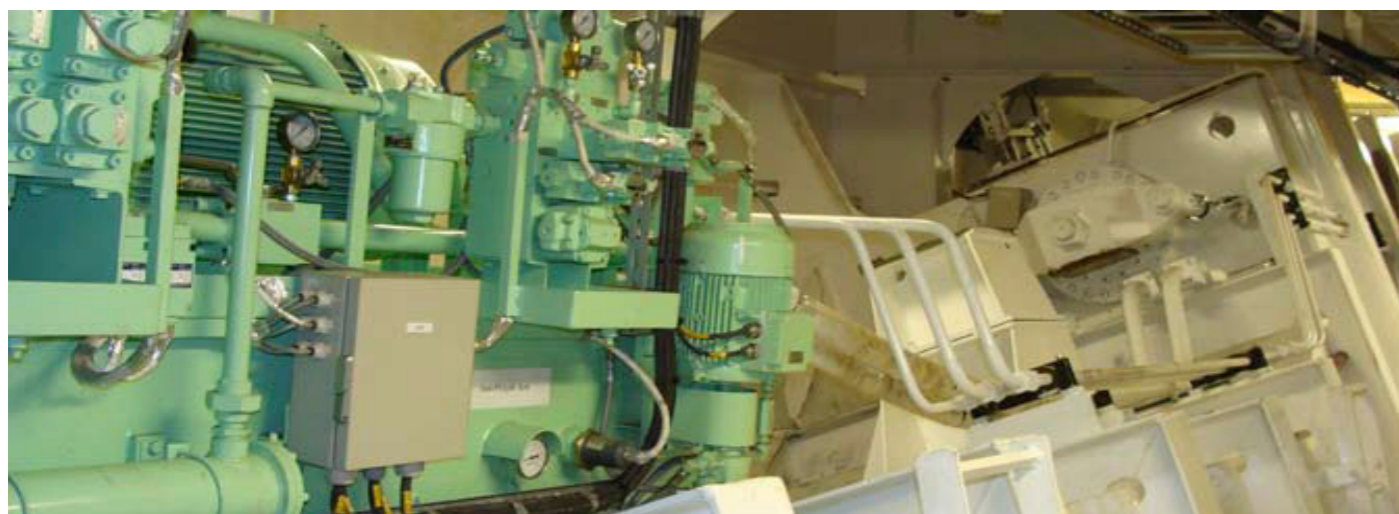
Gyrofin[®] Stabilisers



**Servicing to maintain vessel
safety and performance**



Removal of fin and shaft (for shaft seal replacement)



Computer Controlled Hydraulic Unit

Overview

Gyrofin® ship stabilisation technology from Sperry Marine is designed to provide maximum performance and safety in the roughest of sea conditions using our unique lift control system.

The unique fin movement responds in near real-time to changing forces along the ship's hull, identifying and responding to lift requirements.

Due to the extreme conditions in which the fins operate, regular servicing and maintenance every 18-24 months is recommended to ensure full operation of the fin, power, control and machinery units. Furthermore, a full overhaul and inspection is recommended at each dry-docking of the vessel.

Benefits

- Increased passenger comfort
- Smoother stabilisation
- Improved fuel economy
- Reduced cargo lashing
- Enhanced cargo protection
- Reduced maintenance costs
- Worldwide Sperry Marine Service

Preventative maintenance

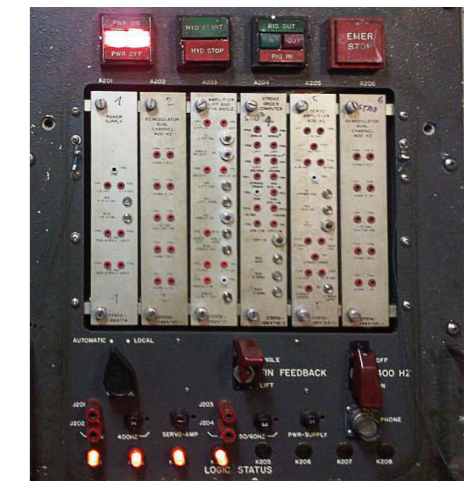
- Periodic sampling of rigging axis lubrication
- Oil sampling and filter replacement of the hydraulic control unit
- Checks on cooling water feeds and temperature
- Monthly lubrication of all mechanical linkages
- Coupling checked periodically
- Monthly checks on hydraulic units
- Inspection of header tanks to ensure correct operating levels.



Non-supported Bridge Analog Control Panel



Non-supported Analog Main Control Unit



Non-supported Analog Local Control Unit



Digital Bridge Control Panel



Digital Main Control Panel



Digital Local Control Unit

Mechanical damage due to external circumstances or mechanical failure has a severe impact on the effectiveness of the Gyrofin Stabilisers and so a major overhaul, supported by a pre-dry dock survey undertaken by our own engineers, will identify all parts required in advance.

Certified spare parts

All of our certified spare parts are available with planned notification so we can work with you to schedule servicing requirements to suit your vessel's timetable.

At your service

Sperry Marine service engineers operate worldwide and offer three types of service:

- At sea fault repairs, electronics service and maintenance
- Dry dock overhaul including yard supervision
- Control system upgrade from older analog control systems to new fully digital control systems.

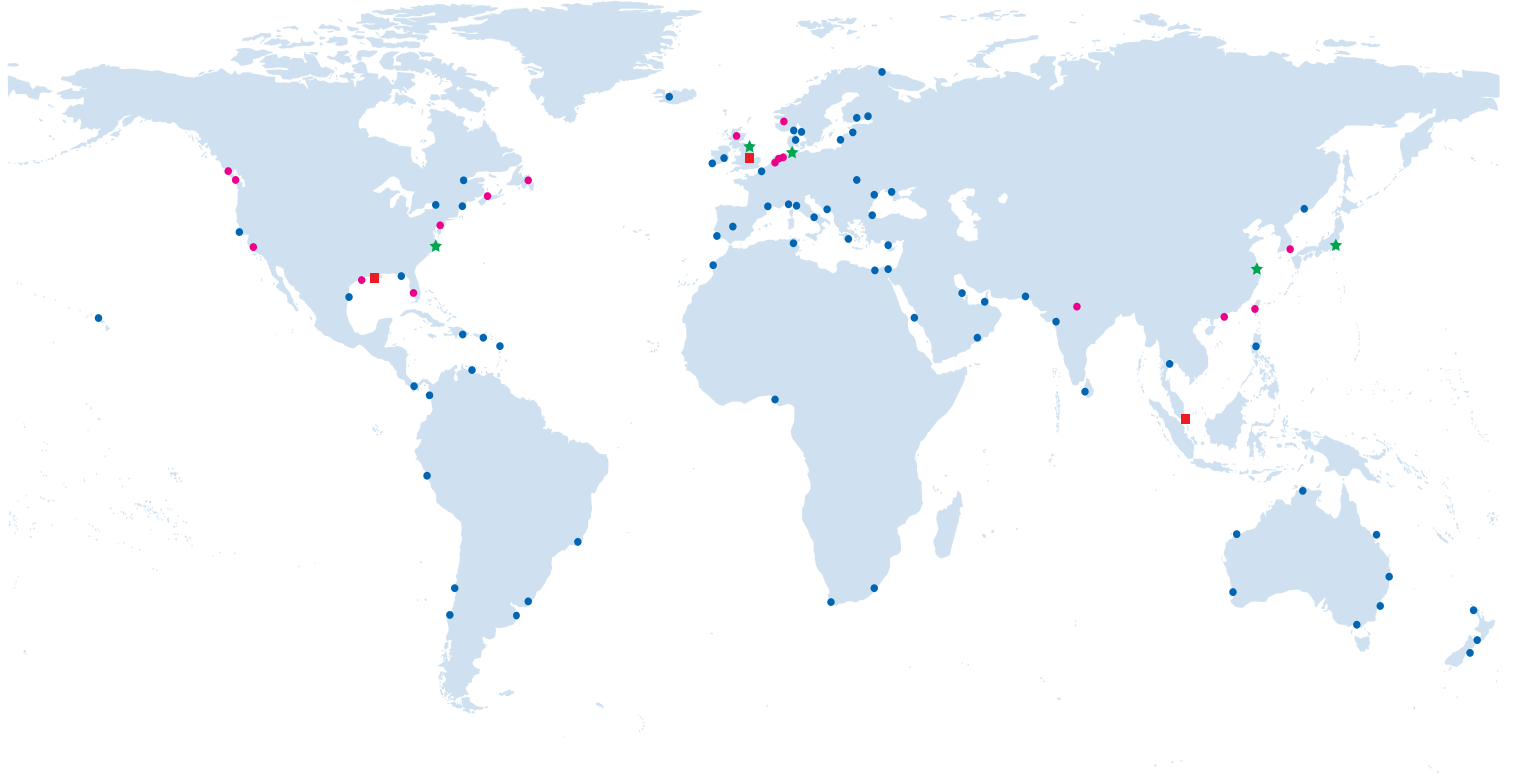
Our technical support is available worldwide 24/7 from qualified engineers who are experienced in all aspects of Gyrofin Stabiliser performance and who can advise on through-life maintenance.

Additionally, upgraded electronics including control systems are available to enhance performance and supportability.

Maintain through-life optimisation

To book a pre-dry dock survey or schedule a service, contact our worldwide service support at Gyrofin.support@sperry.ngc.com

Worldwide service/sales locations



● Sperry Marine Service/Sales locations ● Sperry Marine Service Agents ■ Regional Head offices ★ Gyrofin offices

For more information, please contact:

EUROPE & AFRICA

24-Hour Service

Tel: +31 (0) 10 44 51 630

Fax: +31 (0) 10 44 51 632

Gyrofin.support@sperry.ngc.com

ASIA & OCEANIA

24-Hour Service

Tel: +65 6274 3332

Fax: +65 6271 3339

service.asia@sperry.ngc.com

NORTH & SOUTH AMERICA

24-Hour Service

Tel: +1 504 371 8365

Fax: +1 504 371 8368

sperry.us.service@sperry.ngc.com